



About the Profession

The nuclear medicine technologist is a paramedical worker concerned with the use of radioactive materials for physicians to diagnose and treat medical conditions. Once registered, the NM technologist can practice in the United States and Canada with a state license.

WWW.KC.EDU



About the Degree

The nuclear medicine program is a cooperative educational endeavor with the Nuclear Medicine Institute (NMI) at The University of Findlay. The first year of the program is spent at Kettering College acquiring the courses required for admission to the NMI program. During the first semester in the program on the Kettering campus, the student must apply for admission to NMI. Once accepted, the student will spend the first semester of their second year at the Findlay campus and the final two semesters at a clinical site arranged by the student and the clinical coordinator of the NMI program.

When all requirements have been met at Kettering College and the NMI program at The University of Findlay, Kettering College will award the Associate of Science degree in nuclear medicine technology, and the NMI awards a certificate of completion.

Approval & Accreditation

Kettering College is accredited by the Higher Learning Commission (HLC), approved by the Accrediting Association of the General Conference of Seventh-day Adventist Colleges, Schools, & Universities (AAA), and authorized by the Ohio Department of Higher Education. The nuclear medicine technology program at NMI is accredited by the Joint Review Committee of Education in Nuclear Medicine Technology (JRCNMT) and the Ohio Department of Health Radiologic Technology Section.

Admission Basics

ADMISSION REQUIREMENTS: YEAR 1

The admission requirements to the Kettering College nuclear medicine program are:

- Meet all admission requirements for Kettering College, as listed at www.KC.edu/admission-requirements.
- Be a graduate of an accredited high school with a minimum cumulative GPA of 2.50 (GED score of 170) or have college

minimum cumulative GPA of 2.50 for at least 12 credits.

- Provide evidence of a quality academic background in basic science and mathematics. This includes a grade of at least C in one algebra course and two science courses (biology, chemistry, or physics). One of the science courses should include a laboratory.
- Transfer equivalent credits for MATH 105 Fundamentals of Mathematics (3 credits) or MATH 155 College Algebra (3 credits), earn a grade of C or higher, or score at least 70 percent on the Kettering College math placement test.

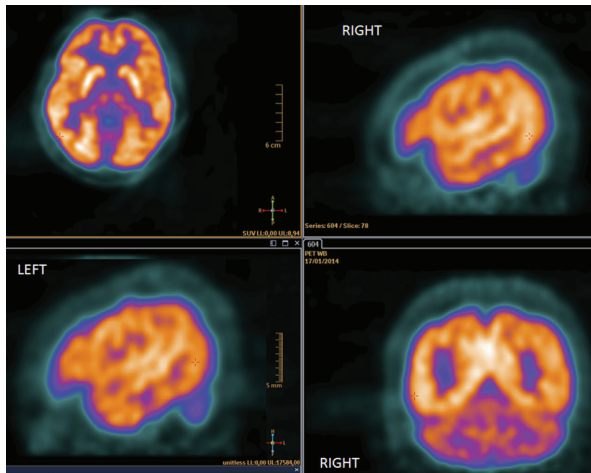
ADMISSION REQUIREMENTS: YEAR 2

During the first semester at Kettering College, the student should apply to the NMI program at The University of Findlay. Acceptance to the program is not guaranteed and is competitive. (See the Kettering College RSI department chair for the necessary documents for NMI.) Students should review the NMI website to ensure that they have an understanding of the NMI program.

A full listing of detailed NMI admission requirements is available at www.KC.edu/NucMed.

For information about NMI, visit www.Findlay.edu and search for nuclear medicine in the Academics section, or you can call the NMI at (419) 434-4708.

Kettering
COLLEGE



Program of Study

Note: Graduates of accredited nuclear medicine programs who are certified by either the ARRT or NMTCB may apply for certain advanced imaging technologies tracks or completion of a Bachelor of Science in Health Sciences at Kettering College.

NUCLEAR MEDICINE

ASSOCIATE OF SCIENCE DEGREE

FIRST YEAR		Fall	Winter	Summer
CHEM 105	Chemistry for Health Sciences	4		
MATH 155	College Algebra	3		
RTCA 121	Medical Terminology	1		
BIOL 119	Human Anatomy & Physiology I	4		
ENGL 101	Writing and Rhetoric I		3	
BIOL 129	Human Anatomy & Physiology II		4	
PHYS 131	Survey of Physics		4	
RELB 101	Seventh-day Adventist Beliefs and the Healing Ministry of Christ		3	
RELP 254	Morality and Medicine			3
COMM 215	Introduction to Human Communication			3
ENGL 102	Writing and Rhetoric II			3
SOC 115	Principles of Sociology			3
TOTAL		12	14	12

SECOND YEAR*		Fall	Winter	Summer
NMED 406	Molecular Imaging Mathematics	3		
NMED 416	Molecular Imaging Physics	2		
NMED 425	Molecular Imaging Radiobiology	1		
NMED 435	Molecular Imaging Radiation Protection	2		
NMED 445	Molecular Non-Imaging Procedures	3		
NMED 455	Molecular Imaging Procedures	5		
NMED 462	Radionuclide Therapies	1		
NMED 465	Radiochemistry and Radiopharmaceuticals	3		
NMED 472	Molecular Imaging Instrumentation	3		
NMED 475	Molecular Imaging SPECT	1		
NMED 477	Molecular Imaging PET	1		
NMED 485	Clinical Nuclear Medicine I		12	
NMED 486	Clinical Nuclear Medicine II			12
NMED 487	Molecular Imaging Capstone			1
TOTAL		25	12	13
TOTAL CREDITS FOR DEGREE		88		

Second-year courses offered at NMI are listed and taught at the 400 level. These courses are not offered at Kettering College and are subject to change

